

# Clean~Up Week

April 17<sup>th</sup>-21<sup>st</sup> 2017

## Rules & Regulations

### CLEAN-UP WEEK

A community service provided free to single family residential customers of Morro Bay Garbage Co.

### ON THE CURB

Place your Clean-Up Week garbage on the curb no later than 6:00am on your regular garbage collection day. Don't block your waste wheelers, we still run automated trucks.

### CONTAINER NOTES

Clean-Up Week garbage may be placed in standard trash cans or tied into bundles.

### MORE CONTAINER NOTES

Standard trash containers will be emptied and left on the curb. Boxes and plastic bags will be taken away with your garbage. If you want your non-standard containers left behind, *please mark or place a note on them.*

### CONTAINER SIZE

Containers or bundles of garbage must weigh 75 pounds or less and must measure four feet or less in overall length. **No hazardous materials will be taken.**

Garbage, greenwaste, & recycling combined for 12 cans, bags, or bundles **plus your waste wheelers.** Excess garbage will be left on the curb.

TWELVE standard trash cans (32 gallons each) OR the equivalent in bags, boxes, or bundles. Each not to exceed 75 pounds and four feet in length

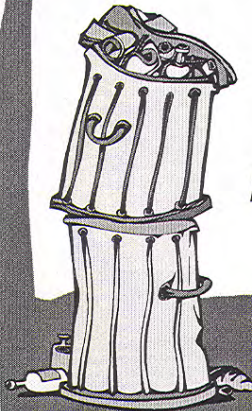
### BULKY ITEMS (PLEASE CALL FIRST)

The following special prices are valid only during Clean-Up Week *Items must be on the curb to qualify for these special prices. You must call one week before your collection day.*

\$10 EACH -LIMIT TWO OF EACH. OVERLY LARGE ITEMS REQUIRING TWO MEN TO HANDLE WILL HAVE ADDITIONAL COST BY QUOTE ONLY  
Televisions • Water Heaters • Couches • Washers • Dryers • Small Appliances • Chairs • Box Springs • Mattresses • Refrigerators • Overstuffed Chairs • Passenger Car Tires (maximum of 4- \$2.50 ea.)

TO ARRANGE FOR PICKUP OF BULKY ITEMS (NOT FREE)  
you must first call 805-528-7430 or  
543-0875

**DON'T PUT OUT YOUR TRASH UNTIL  
YOUR COLLECTION DAY**



## **GENERAL TIPS FROM THE OFFICE**

- 1. PLEASE DON'T USE PLASTIC BAGS IN THE COMMINGLED RECYCLING OR GREENWASTE CANS. WE HAVE TO TEAR THEM OPEN AND CHECK THE CONTENTS. INADVERTENTLY SOMEONE WILL THROW GARBAGE IN WITH THE RECYCLING AND CONTAMINATE THE ENTIRE LOAD. JUST DUMP THE RECYCLING IN THE CAN AND THROW THE BAG AWAY.**
- 2. LARGE PIECES OF CARDBOARD NEED TO BE CUT UP OR BROKEN DOWN SO THEY FIT IN THE BLUE WASTE WHEELER. THE AUTOMATED TRUCKS WE ARE SWITCHING TO CAN'T PICK UP LOOSE CARDBOARD. IF YOU NEED A BIGGER BLUE BIN CALL THE OFFICE.**
- 3. IF WE MAKE THE MISTAKE OR MISS YOU THE TRUCK WILL COME BACK AT NO CHARGE. IF YOU DON'T FOLLOW THE RULES OR FORGET TO PUT YOUR CAN OUT BY 6:00AM AND WE HAVE TO SEND A TRUCK BACK TO YOUR HOUSE THERE WILL BE A TRIP CHARGE. IF YOU ARE UNSURE, CALL THE OFFICE THE DAY BEFORE YOUR COLLECTION DAY.**
- 4. AS WE SWITCH TO AUTOMATED TRUCKS IT IS IMPORTANT TO NOT PACK THE WASTE WHEELER SO TIGHT THAT WHEN TURNED UPSIDE DOWN, NOTHING WILL COME OUT.**

**THE OFFICE NUMBER IS 805-528-7430 or 543-0875**

