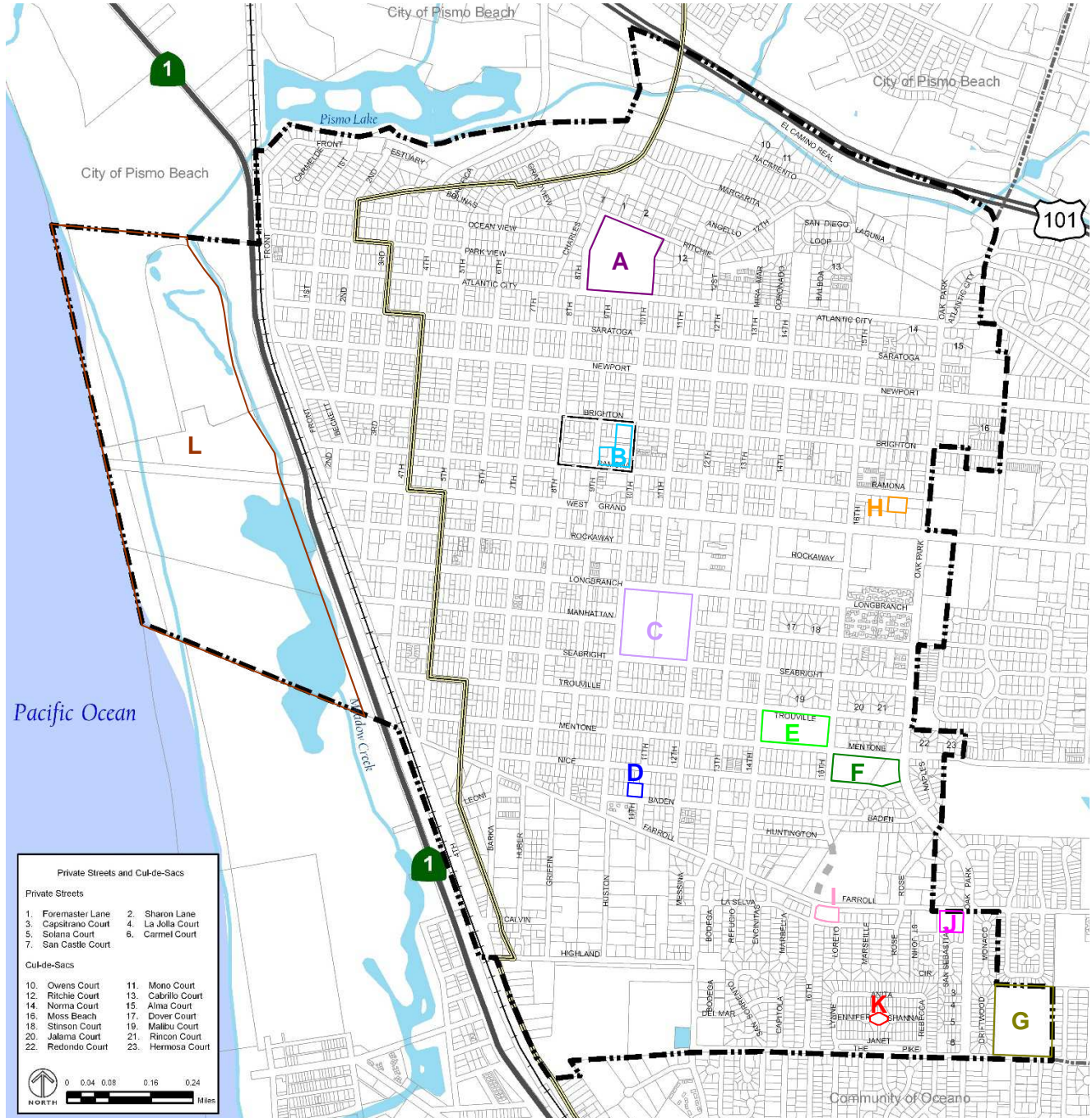


Potential Sensitive Uses Map



- | | | | |
|------|----------|---|--|
| Site | A | Grover Heights Elementary School and Park | 770 North 8 th Street |
| | B | Ramona Garden Park Center | 993 Ramona Avenue |
| | C | Grover Beach Elementary School | 365 South 10 th Street |
| | D | Dandy Lion Day Care | 1089 Baden Avenue |
| | E | Mentone Basin Park | South 14 th Street and Mentone Avenue |
| | F | 16 th Street Park | South 16 th and Mentone Avenue |
| | G | Fairgrove Elementary School | 2101 The Pike |
| | H | South County Skate Park | 1750 Ramona Avenue |
| | I | Hero Community Park | Farroll Road and South 16 th Street |
| | J | Costa Bella Park | Farroll Road and Oak Park |
| | K | Golden West Park | End of Jennifer Court |
| | L | Pismo State Beach | |