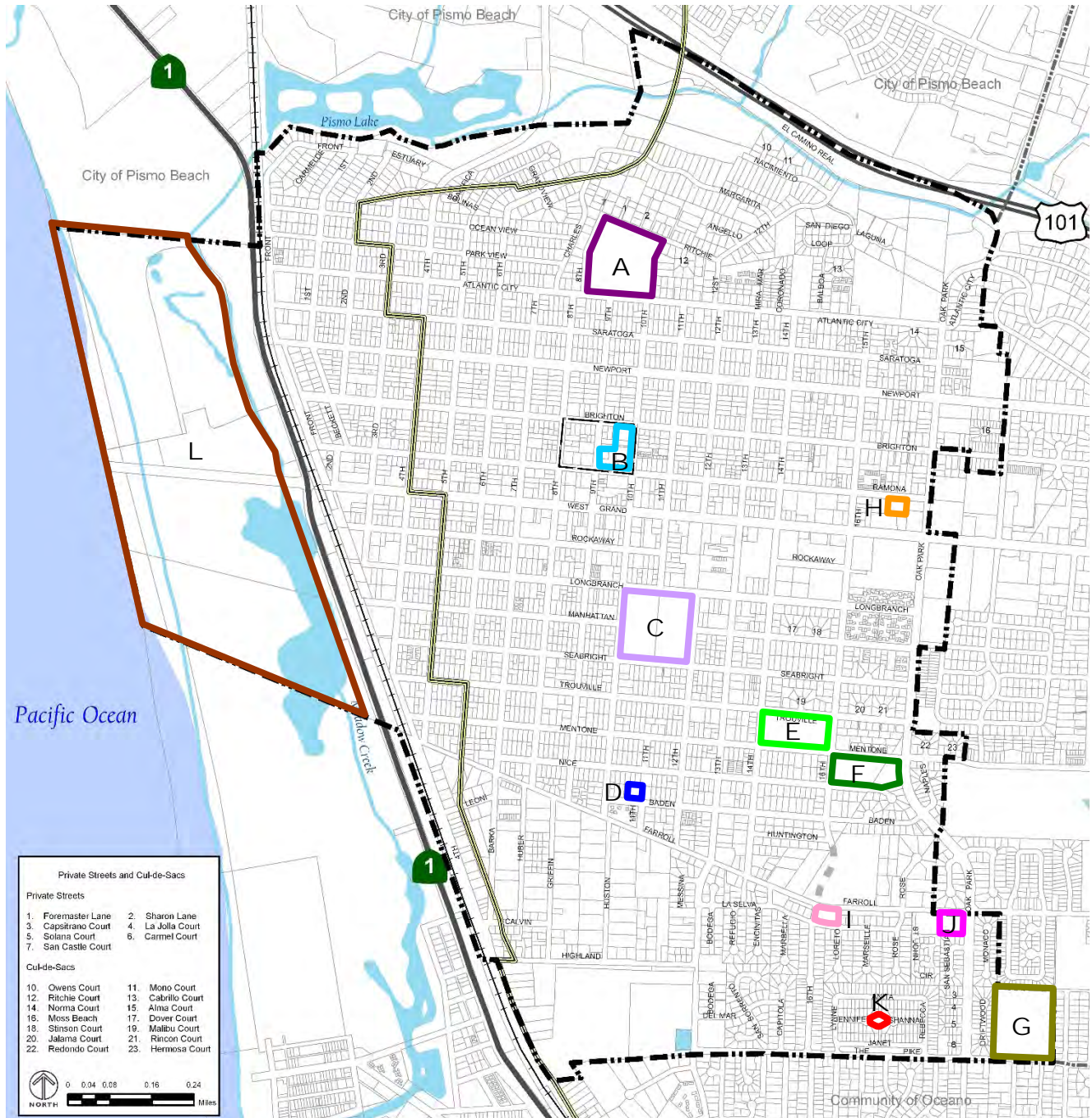


Potential Sensitive Uses Map



- | | | |
|--------|---|--|
| Site A | Grover Heights Elementary School and Park | 770 North 8 th Street |
| B | Ramona Garden Park Center | 993 Ramona Avenue |
| C | Grover Beach Elementary School | 365 South 10 th Street |
| D | Dandy Lion Day Care | 1089 Baden Avenue |
| E | Mentone Basin Park | South 14 th Street and Mentone Avenue |
| F | 16 th Street Park | South 16 th and Mentone Avenue |
| G | Fairgrove Elementary School | 2101 The Pike |
| H | South County Skate Park | 1750 Ramona Avenue |
| I | Hero Community Park | Farroll Road and South 16 th Street |
| J | Costa Bella Park | Farroll Road and Oak Park |
| K | Golden West Park | End of Jennifer Court |
| L | Pismo State Beach | |